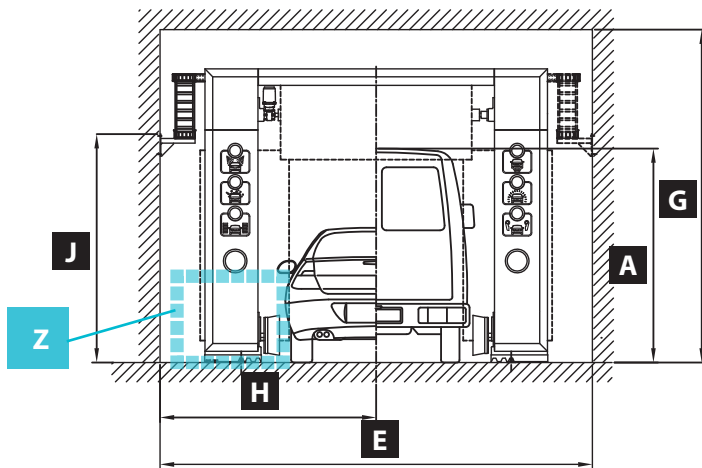
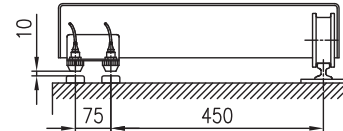


With enclosure
Dimensions

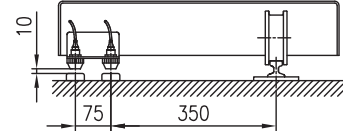


Detail Z

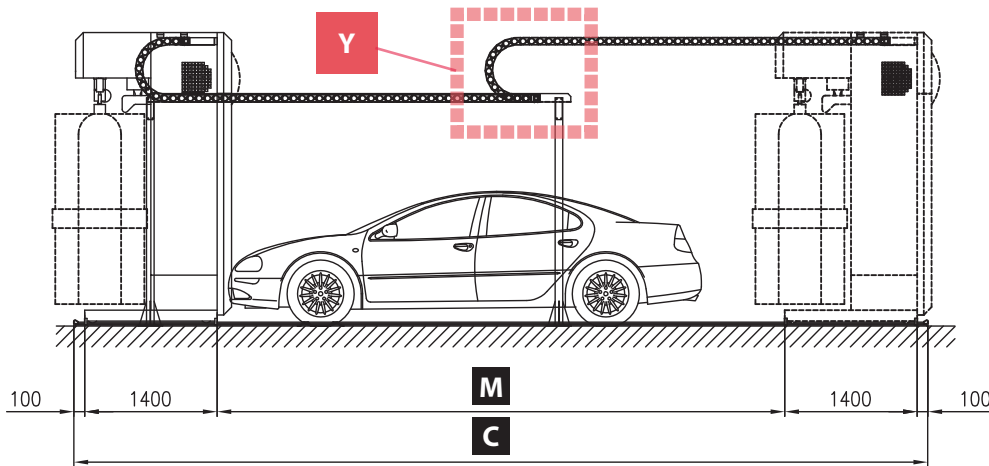
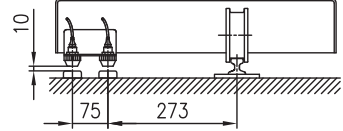
Between rails: 2500±5



Between rails: 2700±5

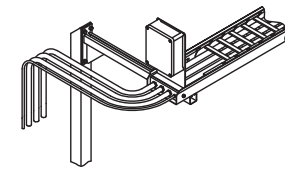


Between rails: 2854±5

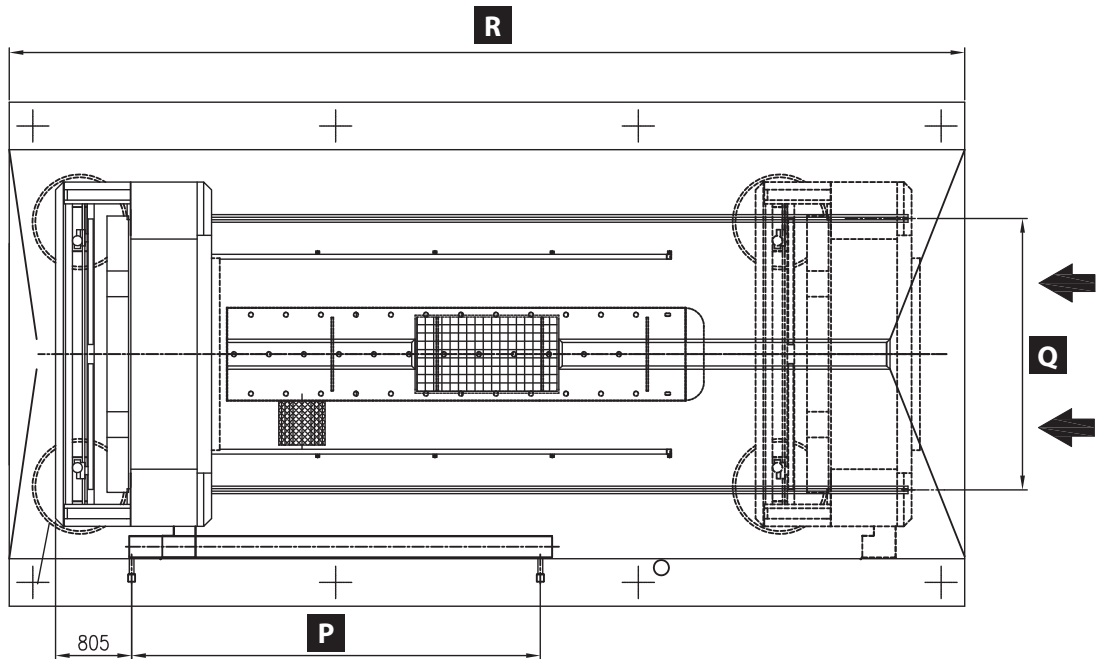
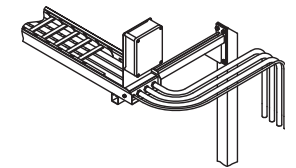


Detail Y

Left side connection



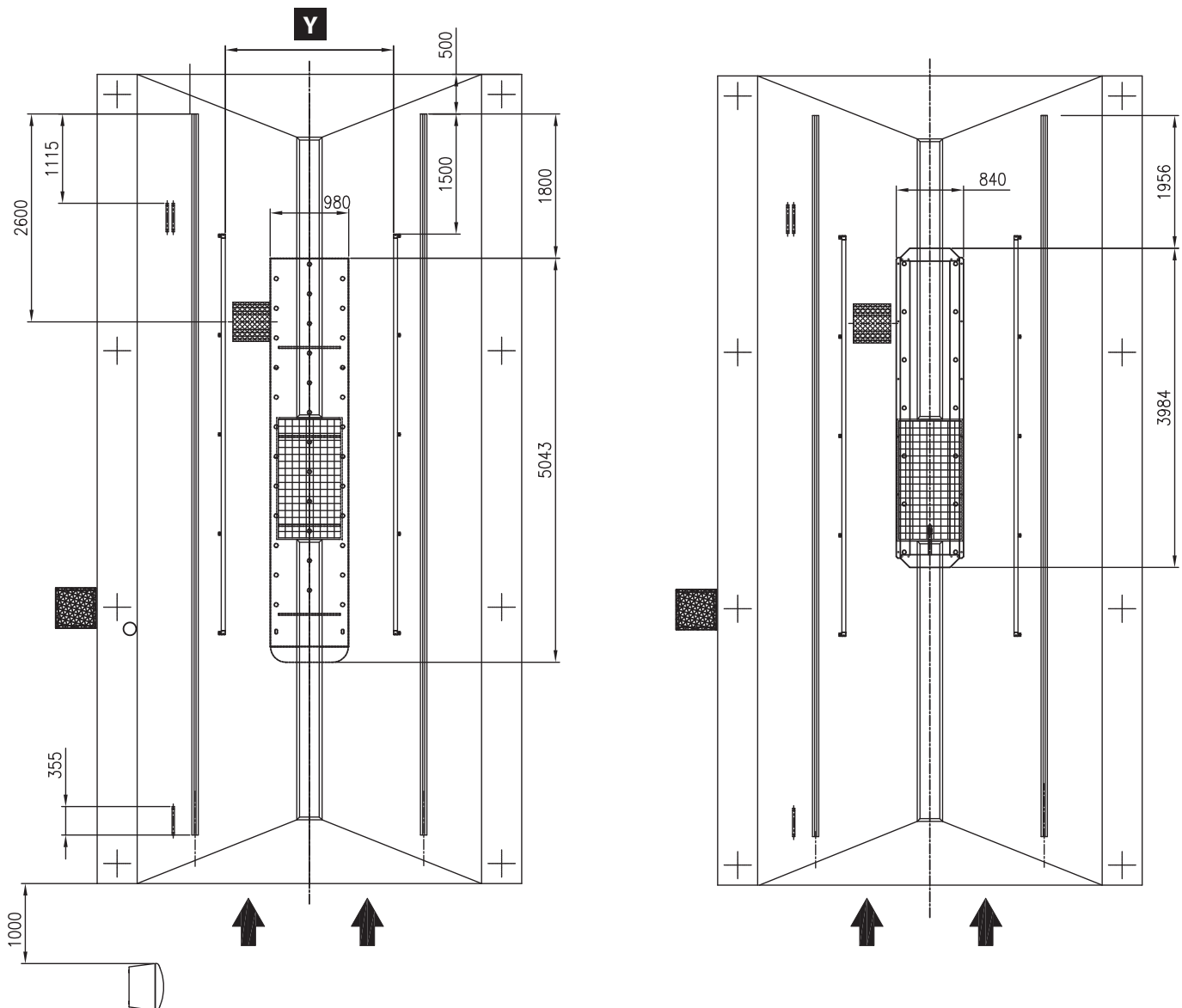
Right side connection



The distance between the underside of the foot and the floor must not exceed 10 mm.
With enclosures 4500 mm, you will need to install the anti-smashing system and wire or rubber switch.

A	Max. vehicle height	2100	2300	2500	2700	
B	Max. vehicle width	2500				
C	Rail length	9000	9000	9000	10000	11000
E	Recommended	4620	4620	4620	4620	4620
	Minimum	4100	4100	4100	4100	4100
	Without cutting supporting arm	5024	5024	5024	5024	5024
G	Chassis height	2950	3150	3350	3550	3550
H	Recommended	2310	2310	2310	2310	2310
	Minimum	2090	2090	2090	2090	2090
	Without cutting supporting arm	2714	2714	2714	2714	2714
J	Height service line	2201	2401	2601	2801	2801
M	Max. vehicle length	6000	6000	6000	7000	8000
P	Between centres of posts	4320	4320	4320	4820	5320
Q	Between centres of rails	2854	2854	2854	2854	2854
R	Length bay enclosure	10100	10100	10100	11100	12100
Y	Between centring guides	2050	2050	2050	2050	2050

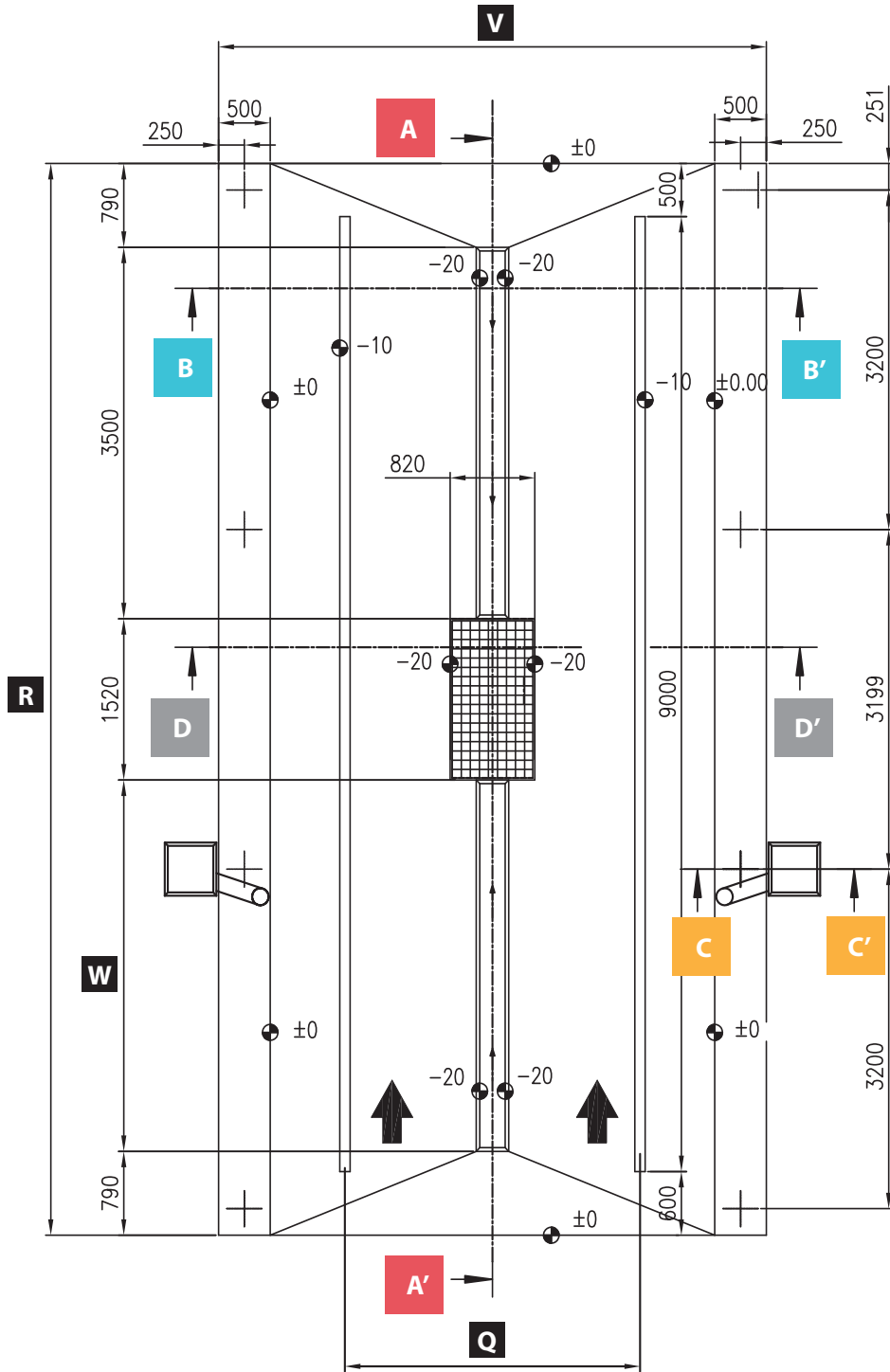
Installation of parts



Measurements in mm.

Measurements and cross sections

No underchassis wash



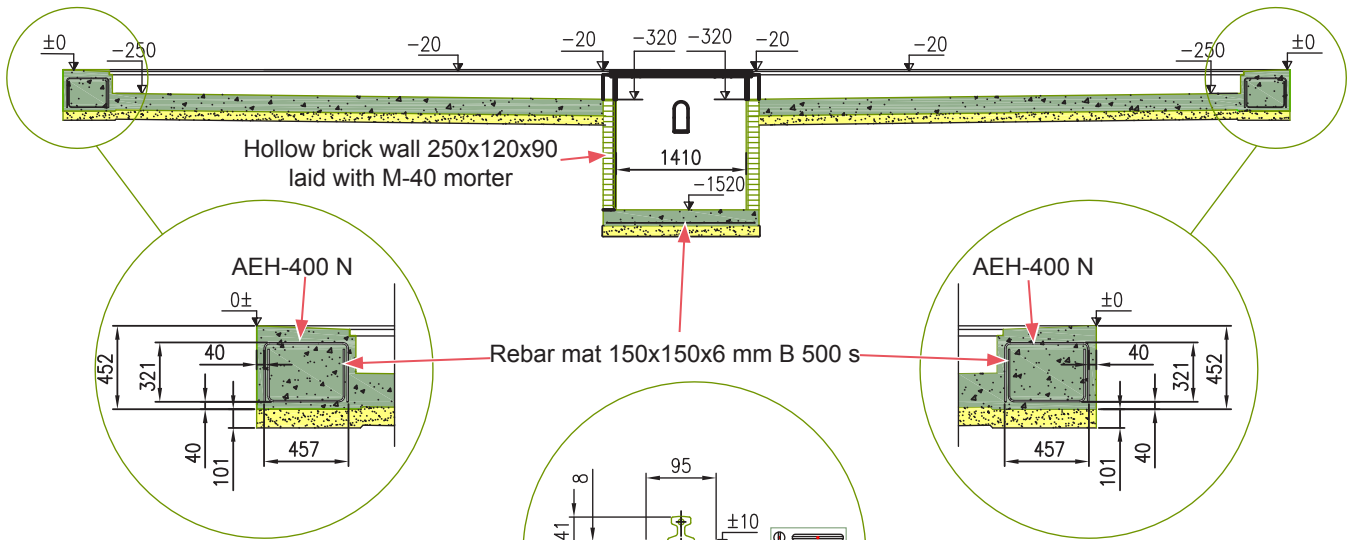
Surface of bay treated with non-slip finish.

Any guarantees as to the dimensions of the concrete beds depend on the floor being properly compacted. The dimensions of the frames and grates can be consulted on page 21.

		2100	2300	2500	2700	
A	Max. vehicle height	2100	2300	2500	2700	
B	Max. vehicle width	2500				
C	Rail length	9000	9000	9000	10000	11000
Q	Between centres of rails	2854	2854	2854	2854	2854
R	Length bay enclosure	10100	10100	10100	11100	12100
V	Width for enc. 4.5 m	5000	5000	5000	5000	5000
	Width for enc. 4.8 m	5300	5300	5300	5300	5300
W	Length of entry grid, no underchassis wash	3500	3500	3500	4500	5500

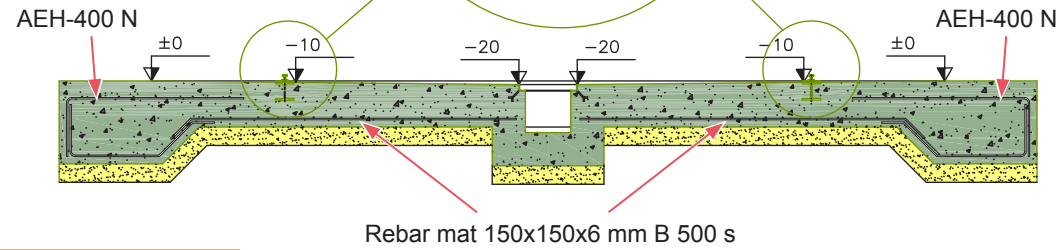
Measurements in mm.

SECTION A - A'



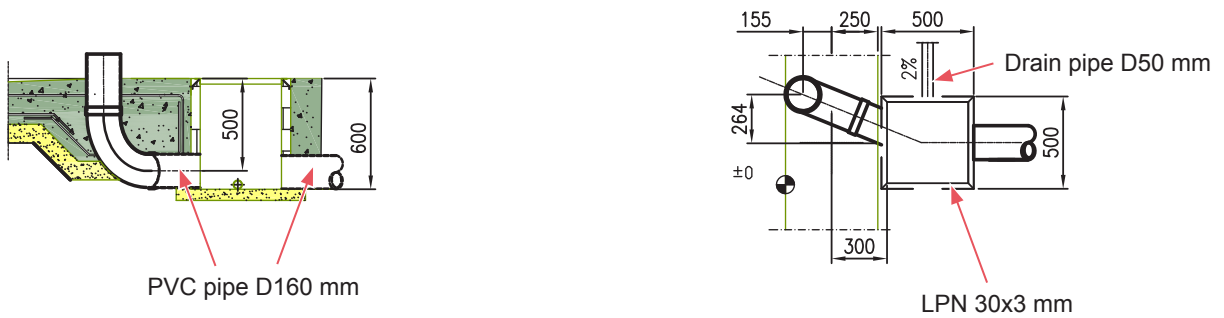
SECTION B - B'

HEA Section 100x9000 mm
Not supplied by Istobal SA

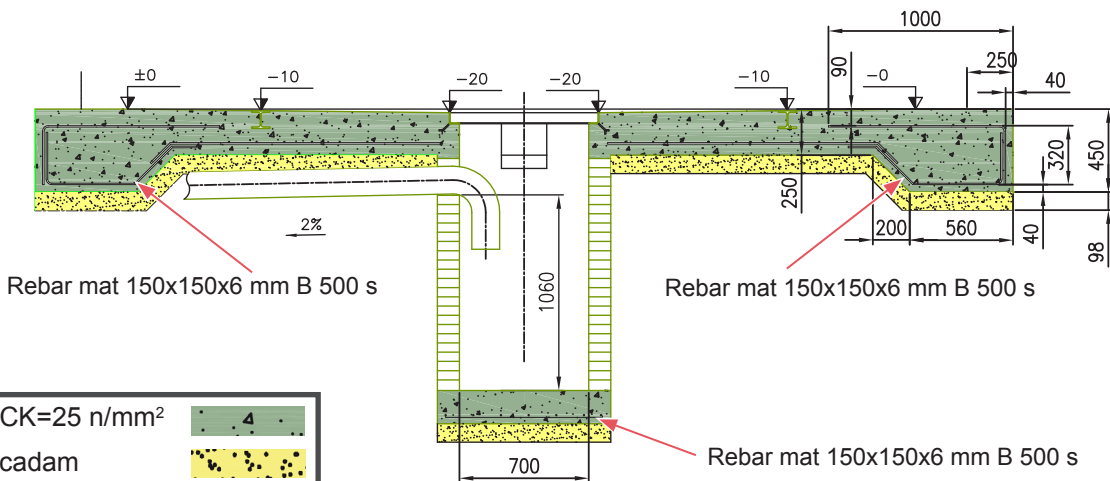


SECCIÓN C - C'

Energy chain connection, right or left (depending on the layout of the facility).



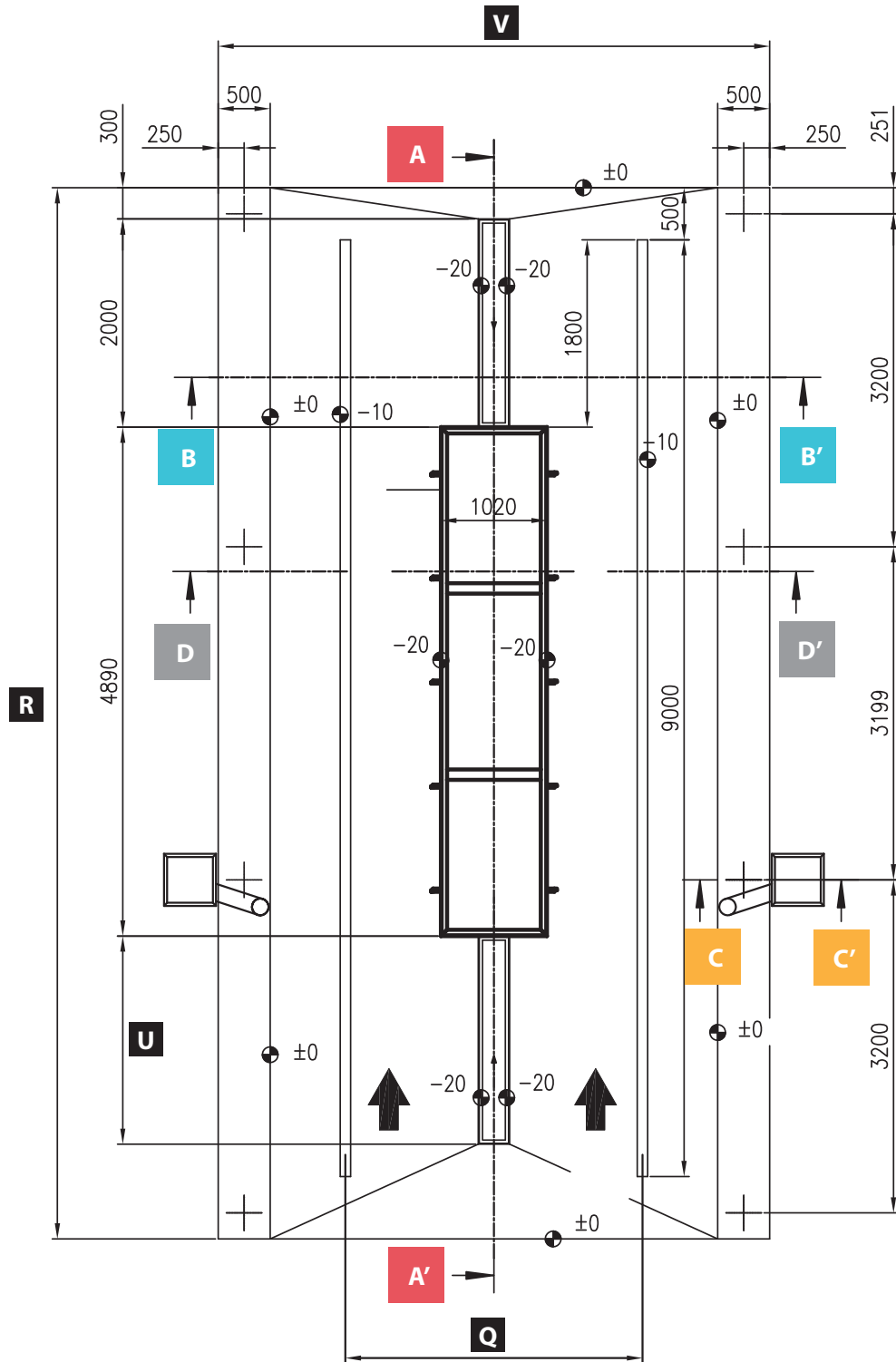
SECCIÓN D - D'



Concrete FCK=25 n/mm ²	
Macadam	

Measurements in mm.

With underchassis wash



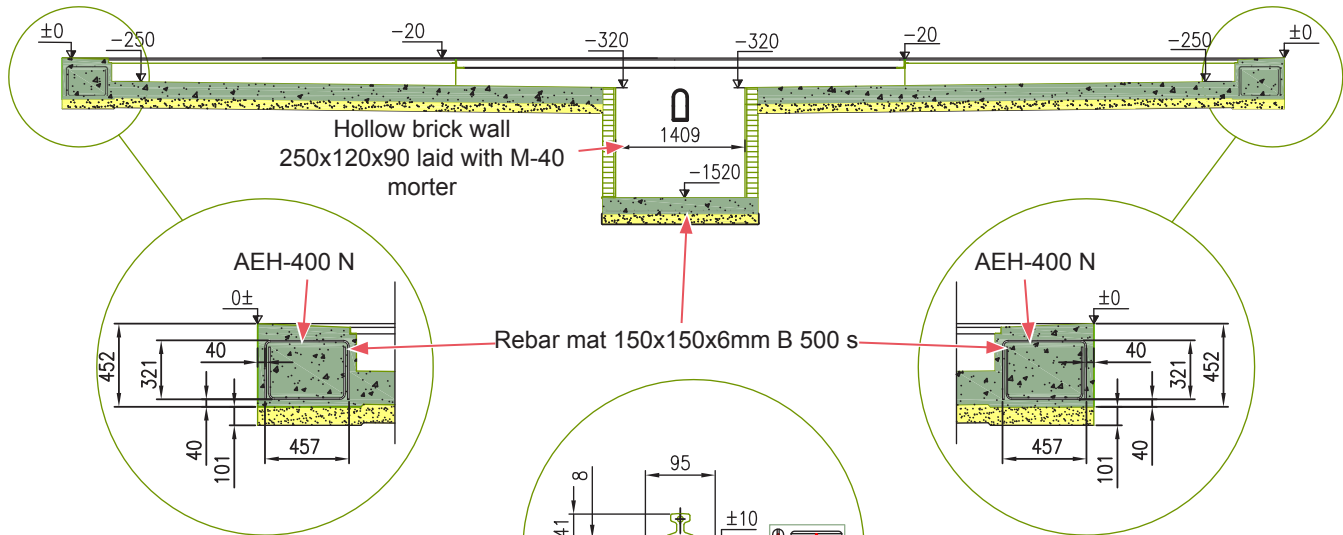
Surface of bay treated with non-slip finish.

Any guarantees as to the dimensions of the concrete beds depend on the floor being properly compacted. The dimensions of the frames and grates can be consulted on page 21.

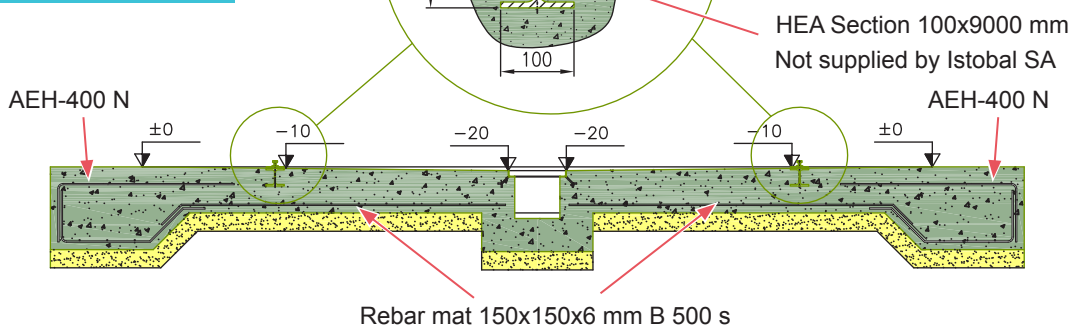
A	Max. vehicle height	2100	2300	2500	2700	
B	Max. vehicle width	2500				
C	Rail length	9000	9000	9000	10000	11000
Q	Between centres of rails	2854	2854	2854	2854	2854
R	Length bay enclosure	10100	10100	10100	11100	12100
U	Length of entry grid, with underchassis wash	2000	2000	2000	3000	4000
V	Width for enc. 4.5 m	5000	5000	5000	5000	5000
	Width for enc. 4.8 m	5300	5300	5300	5300	5300

Measurements in mm.

SECTION A - A'

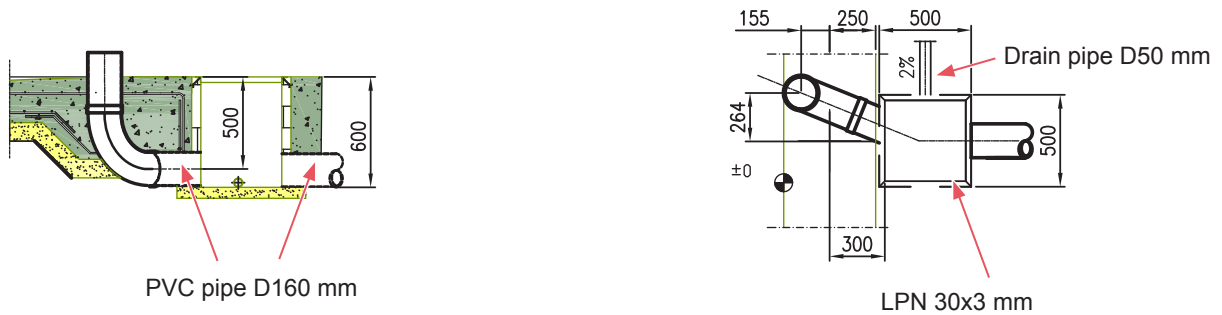


SECTION B - B'

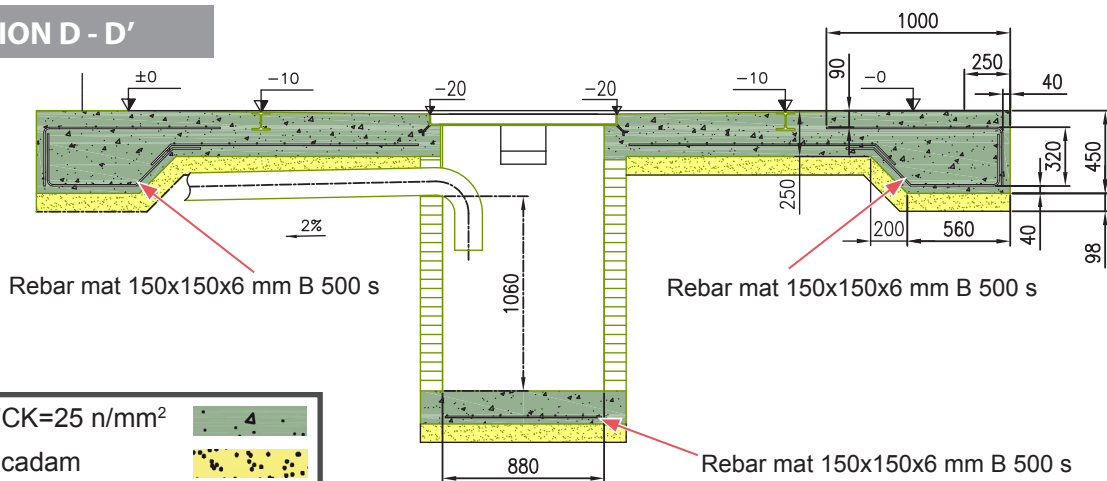


SECTION C - C'

Energy chain connection, right or left (depending on the layout of the facility).



SECTION D - D'



Concrete FCK=25 n/mm ²	
Macadam	

Measurements in mm.